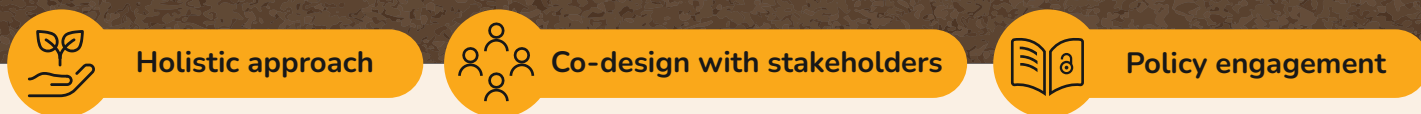


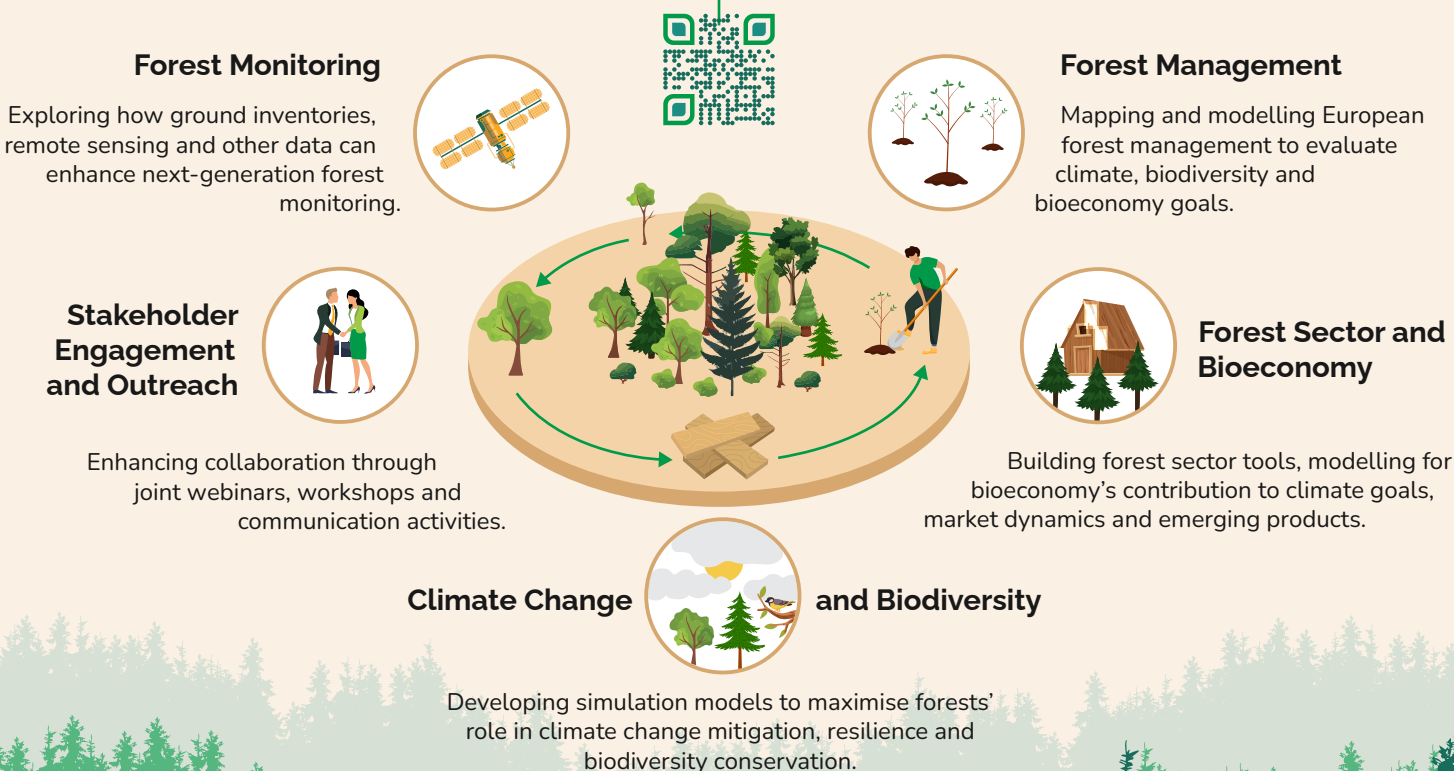
MAXIMISING FORESTS' CONTRIBUTION TO CLIMATE NEUTRALITY WITH BIODIVERSITY CONSERVATION AND BIOECONOMY SUPPORT

How are ForestNavigator, ForestPaths and PathFinder working together?

The three Horizon Europe projects are developing complementary policy pathways and platforms to maximise the contribution of forests towards climate neutrality, biodiversity and the bioeconomy through optimised forest management and wood use.



 ForestNavigator forestnavigator.eu	Goal ForestNavigator uses well-established, high-resolution EU and national modelling along with near real-time data to develop and evaluate policy pathways synergistic for climate, biodiversity and bioeconomy.	RESULT The ForestNavigator Policy Modelling Toolbox provides data, models and pathways at both EU and national levels which are accessible through the ForestNavigator Portal, a decision support tool for policymakers and (anyone else) across the EU and within individual countries.
 ForestPaths forestpaths.eu	Goal ForestPaths co-designs, quantifies and evaluates policy pathways for how European forests and the forest-based sector can support achieving climate and biodiversity goals.	RESULT ForestPaths delivers policy pathways that are co-designed with stakeholders and quantified and evaluated with next-generation models, tools and data. The policy pathways are to become available on CANOPY – an open-access support platform for European policymakers.
 PathFinder pathfinder-heu.eu	Goal PathFinder develops a prototype of a European Forest Monitoring System. This will encompass integration of field and remote sensing data, high-resolution mapping and reliable estimation, along with a segment for forecasting and pathway assessment.	RESULT The PathFinder mapping and estimation platform will serve as a medium for the dissemination of the project's results. Additionally, the project proposes a governance structure aimed at ensuring the successful implementation of the European Forest Monitoring System.



ForestNavigator, ForestPaths and PathFinder have received funding from the European Union's Horizon Europe Program under grant agreements N°101056875, N°101056755 and N°101056907, respectively. Views and opinions expressed are however those of the author(s) only and do not necessarily reflect those of the European Union or the European Commission. Neither the EU nor the EC can be held responsible for them.